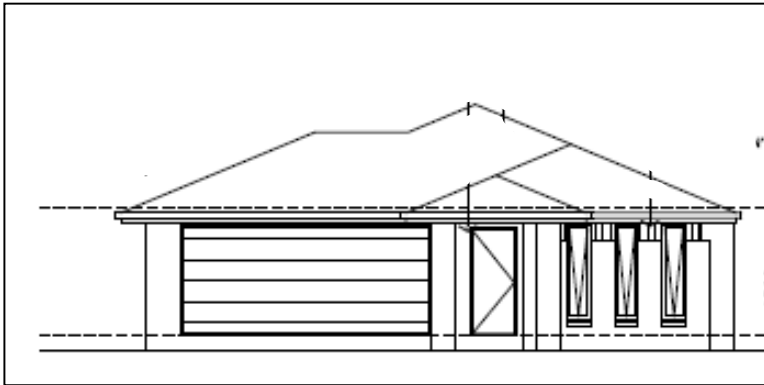


HOUSE AND LAND PACKAGE

Lot 102 Liriope Drive \$430,500



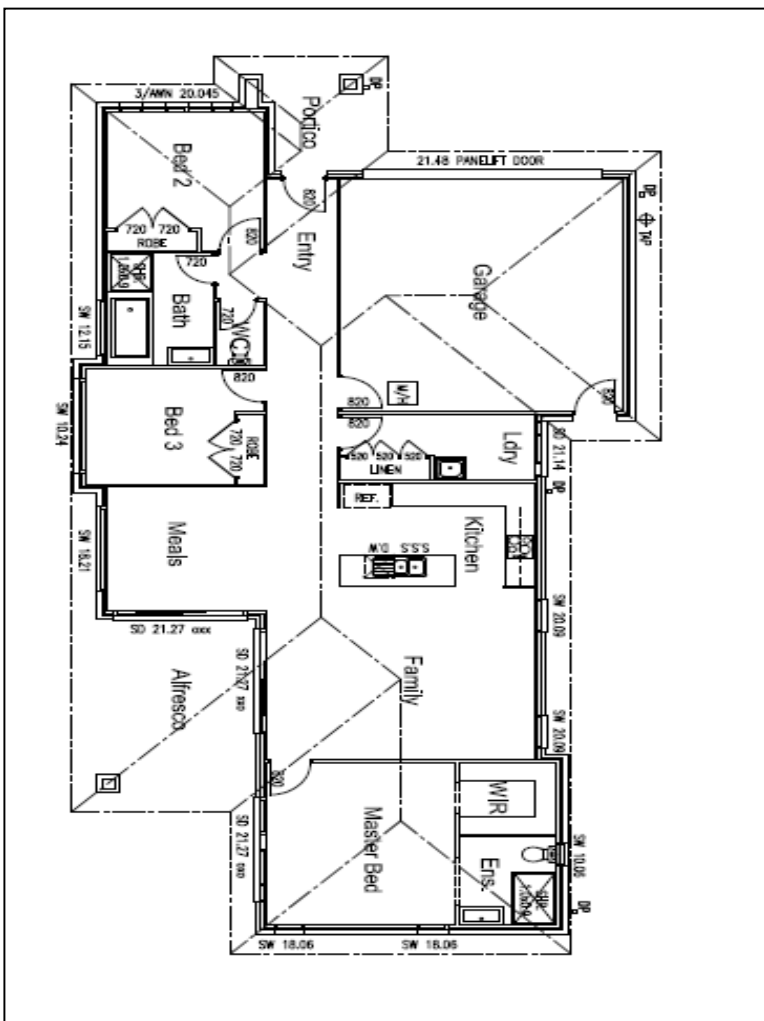
EMMADALE GARDENS



Area	
Living	136.70m ²
Garage	37.40m ²
Alfresco	14.30m ²
Portico	4.90m ²
Total	193.30m²

FEATURES INCLUDE

- Clay brick exterior from Barefoot Homes Range
- Colourbond roof from Barefoot Homes Range
- Omega Stainless Steel kitchen appliances
- Automatic garage door including handset
- Modern Kitchen with laminate benchtops
- Quality Chrome Tapware with Mixers
- 24L gas Instantaneous hot water System
- Carpet and Tiles as indicated
- Exposed Aggregate Driveway and Alfresco
- Barrier Screens to all sliding windows and doors
- 1.8m high timber fence with single gate
- Clothesline and letterbox
- Air Conditioning to Master and Family
- Turf to front and rear
- TV Antennae
- Window coverings



This work is exclusively owner by Barefoot Homes and can not be reproduced or copied. Price is subject to soil test, contour survey and is inclusive of GST. Price is fixed for 30 days from 23rd March 2010. Doucon BSA 1152190